

## Rectangular designs



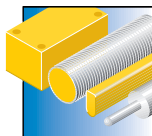
Rectangular shaped capacitive sensors are the compact solution for your facilities. The rugged housing and high-quality components provide additional options for installation and detection. The 8 mm Q08 as well as the variable CP80 convince through easy mounting and short blind zones.

The rectangular types thus simplify the assembly and enhance the operability of your systems.

### Features

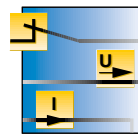
- Stable and resistant housings
- Large switching distances
- Excellent EMC properties
- Easy to mount
- Connector and cable versions

### Properties



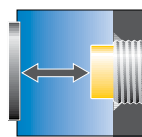
#### Designs

All designs available, from the flat 5.5 mm QF5.5 up to the big sized 80 x 40.5 x 80 mm CP80



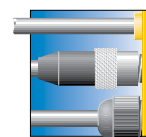
#### Electrical versions

3-wire and 4-wire DC, as well as 2-wire AC and NAMUR devices, PNP and NPN switching; NO, NC contact or with antivalent switching output



#### Switching distances

5 mm versions for close-range detection, 50 mm versions for long ranges



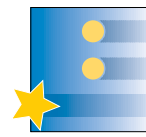
#### Electrical connections

2 m cable PVC or PUR, male M8 x 1, Ø 8 mm and M12 x 1 or terminal chamber



#### Materials

Rugged and chemical resistant plastic and metal housings



#### Special features

Fine adjustment via potentiometer,



#### Internet link

Scan the QR code to access our products on the internet

## QF5,5



### General data

<b>Connection</b>	2 m cable	<b>Housing material</b>	PP
<b>Ambient temperature</b>	-25...+70 °C	<b>Dimensions</b>	20.3 x 5.5 x 54 mm

### Types and data – selection table

Type	Operating voltage	Output	Switching distance	Approvals	Operating current [mA]	Adjustment	w	d
BC10-QF5,5-AP6X2	10...30 VDC	PNP	10 mm,	–	200, (K)	Potentiometer	w061	d394
BC10-QF5,5-RP6X2	10...30 VDC	PNP	10 mm,	–	200, (K)	Potentiometer	w062	d394
BC5-QF5,5-Y1X/S250	8.2 VDC	NAMUR	5 mm,	II 2 G II 1 D SIL2	–	fixed	w063	d395

Many different types available, also as NPN version, see type code

## Q08



### General data

<b>Operating voltage</b>	10...30 VDC	<b>Switching distance</b>	5 mm,
<b>Housing material</b>	GD-Zn	<b>Operating current [mA]</b>	200, (K)
<b>Ambient temperature</b>	-25...+70 °C	<b>Dimensions</b>	20 x 8 x 32 mm
<b>Adjustment</b>	fixed		

### Types and data – selection table

Type	Connection	Output	w	d
BC5-Q08-AP6X2-V1131/S250	male, Ø 8 mm	PNP	w064	d396
BC5-Q08-AP6X2/S250	2 m cable	PNP	w061	d397
BC5-Q08-RP6X2/S250	2 m cable	PNP	w062	d397
BC5-Q08-RP6X2-V1131/S250	male, Ø 8 mm	PNP	w066	d396

Many different types available, also as NPN version, see type code

## Q10



### General data

Operating voltage	10...30 VDC
Housing material	PBT
Ambient temperature	-25...+70 °C
Adjustment	fixed

Switching distance	8 mm,
Operating current [mA]	200,
Dimensions	25 x 10.8 x 42 mm

### Types and data – selection table

Type	Connection	Output	w	d
BC8-Q10-AP6X2/S250	2 m cable	PNP	w061	d398
BC8-Q10-RP6X2/S250	2 m cable	PNP	w062	d398
BC8-Q10-AP6X2-V1131/S250	male	PNP	w064	d399
BC8-Q10-RP6X2-V1131/S250	male	PNP	w066	d399

Many different types available, also as NPN version, see type code

## Q14



### General data

Operating voltage	10...65 VDC
Housing material	PBT
Ambient temperature	-25...+70 °C
Adjustment	Potentiometer

Switching distance	10 mm,
Operating current [mA]	200,
Dimensions	30 x 14 x 55.5 mm

### Types and data – selection table

Type	Connection	Output	w	d
BC10-Q14-AP4X2	2 m cable	PNP	w061	d400
BC10-Q14-VP4X2	2 m cable	PNP	w067	d400
BC10-Q14-RP4X2	2 m cable	PNP	w062	d400
BC10-Q14-AP4X2-V1131	male, M8 x 1	PNP	w064	–

Many different types available, also as NPN version, see type code

## Q20



### General data

Switching distance	20 mm,	Housing material	PBT
Ambient temperature	-25...+70 °C	Dimensions	40 x 20 x 68 mm
Adjustment	Potentiometer		

### Types and data – selection table

Type	Connection	Operating voltage	Output	Operating current [mA]		
BC20-Q20-AP4X2-H1141	male, M12 x 1	10...65 VDC	, PNP	200,	w064	d401
BC20-Q20-AP4X2	2 m cable	10...65 VDC	, PNP	200,	w061	d402
BC20-Q20-RP4X2	2 m cable	10...65 VDC	, PNP	200,	w062	d402
BC20-Q20-RP4X2-V1131	male, M8 x 1	10...65 VDC	, PNP	200,	w066	d403
BC20-Q20-VP4X2-H1141	male, M12 x 1	10...65 VDC	, PNP	200,	w069	d401
BC20-Q20-AZ3X2	2 m cable	20...250 VAC	, 2-wire	–	w071	d402
BC20-Q20-RZ3X2	2 m cable	20...250 VAC	, 2-wire	–	w072	d402

Many different types available, also as NPN version, see type code

## CP40



### General data

Switching distance	20 mm,	Housing material	PBT
Ambient temperature	-25...+70 °C	Dimensions	40 x 40 x 114 mm
Adjustment	Potentiometer		

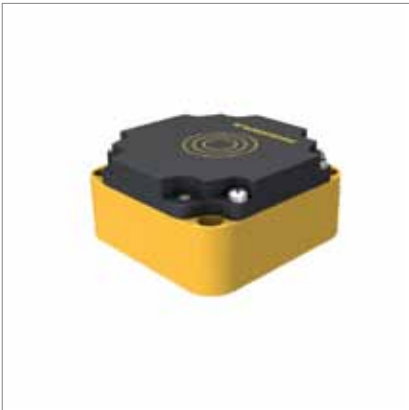
Variable orientation of active face in 9 directions

### Types and data – selection table

Type	Connection	Operating voltage	Output	Operating current [mA]		
BC20-CP40-VP4X2	Terminal chamber	10...65 VDC	, PNP	200,	w073	d404
BC20-CP40-VP4X2-H1141	male, M12 x 1	10...65 VDC	, PNP	200,	w069	d405
BC20-CP40-FZ3X2	Terminal chamber	20...250 VAC	connection programmable, 2-wire	–	w074	d404

Many different types available, also as NPN version, see type code

## CP80



### General data

Switching distance	50 mm,
Ambient temperature	-25...+70 °C
Adjustment	Potentiometer

Housing material	PBT
Dimensions	80 x 40.5 x 80 mm

### Types and data – selection table

Type	Connection	Operating voltage	Output	Operating current [mA]		
NC50-CP80-VP4X2	Terminal chamber	10...65 VDC	, PNP	200,	w073	d406
NC50-CP80-VP4X2-H1141	male, M12 x 1	10...65 VDC	, PNP	200,	w069	d407
NC50-CP80-FZ3X2	Terminal chamber	20...250 VAC	,  , 2-wire	–	w074	d406

Many different types available, also as NPN version, see type code

