

# CT515R

## Current monitoring

### Power supply

Nominal voltage	36 V DC
Operating voltage range	18 ... 45 V
Power consumption DC	≤ 0.5 W

### Measuring circuit

Measured parameters	I
Monitoring functions	Under, over, inside, outside
Rated measurement current	2 A
Measurement current range	0 ... 3 A
Undercurrent setting range	0 ... 2 A
Overcurrent setting range	0 ... 2 A
Alarm delay	100 ms / 500 ms / 2 s
Alarm reset delay	100 ms

### General data

Ambient temperature storage (no ice)	-40 ... 85 °C
Ambient temperature operation railway version	-40 ... 70 °C
Dimension	fig. 2
Weight	25 g
Protection degree	IP 20
Housing material	PC

### Product reference

Description	Type	36
Current monitoring, railway version	CT515R/DC...V	✓

Other voltages on request. Please contact support@comatreleco.com.  
 "... " list control circuit voltage to complete product references.

### Accessories

Socket	S3-MR, S3-M0R, S3-M1R
--------	-----------------------



fig. 1. Wiring diagram

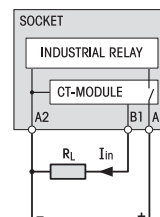
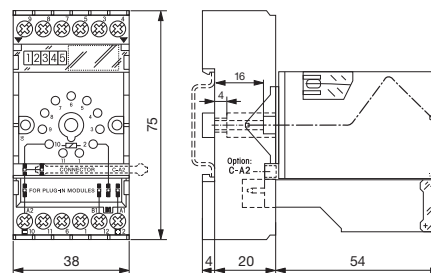


fig. 2. Dimension (mm)



### Standards and approvals

Standards	IEC/EN 60947; EN 61000-6-2; EN 61000-6-3
Railway standards	EN 50155; EN 45545-2

Approvals

	Description	MRM11	MRM11R	MRM32	MRM32R	MRU11	MRU32	MV53	SSU34	SSU31	SSU33L	MRI11	MRI32	TSR19	ESU-D2R	CT515R	CT524R
Monitoring	One phase voltage monitoring	●	●			●		●									
	Three phase voltage monitoring			●	●		●		●		●						
	Four channel voltage measuring																
	DC Voltage monitoring	●	●	●	●	●	●										●
	One phase current monitoring	●	●									●					
	Three phase current monitoring			●	●								●				
	Four channel current measuring																
	DC current monitoring	●	●	●	●							●	●				●
	Phase failure			●	●		●		●	●	●						
	Phase sequence monitoring			●	●		●		●	●	●						
	Phase angle monitoring / measuring*			●	●		●		●		●						
	Differential voltage monitoring / measuring*								●		●						
	Neutral failure monitoring								●		●						
	Frequency monitoring / measuring*	●	●	●	●	●	●		●		●	●					
	Apparent power monitoring / measuring*	●	●	●	●												
	Active power monitoring / measuring*	●	●	●	●												
	Power factor monitoring / measuring*	●	●	●	●												
	Active energy measuring																
	THDI / THDU measuring																
	PTC monitoring													●			
Earth failure monitoring															●		
Functions	Threshold „over“ exceeded fig. 3.	●	●	●	●	●	●	●	●		●	●	●	●		●	●
	Theshold „under“ exceeded fig. 4.	●	●	●	●	●	●	●	●	●	●	●	●	●	●	●	●
	„Inside“ band entered fig. 2.	●	●	●	●	●	●					●	●			●	●
	„Outside“ band entered fig. 1.	●	●	●	●	●	●					●	●			●	●
	Alarm on-delay	●	●	●	●	●	●	●	●		●	●	●		●	●	●
	Alarm off-delay	●	●	●	●	●	●	●					●	●			
	Latching alarm output function	●	●	●	●	●	●						●	●	●		
	Threshold selectable	●	●	●	●	●	●	●	●				●	●	●	●	●
	Threshold fixed									●	●				●		
Power supply	Supply isolated from measuring circuit	●	●	●	●	●	●					●	●	●	●		
	Supply from measure circuit							●	●	●	●					●	●
Mounting	DIN rail mounting	●	●	●	●	●	●	●	●			●	●		●		
	Housing according IEC/EN 43880 (electrical distribution mounting)	●	●	●	●	●	●	●				●	●				
	Plug-in (socket mounting)									●	●	●		●		●	●

