



## Energy meters

Energy meters		Type	Page
Dual function counters	Energy and time (AC)	HW 66 / HW 66 M	262

# Energy meters

Dual function counters

Energy and time (AC)

HW 66 / HW 66 M



The HW 66 and HW 66 M combination meters consist of an hour meter and an energy meter.

These panel-mounted devices require only a limited installation depth and can be used in a wide variety of application areas. The count pulses can be read out via the SO output.

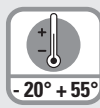
**Additional model:**  
MID version for applications requiring official calibration.

MID approved



115/230 V

power supply



- 20° + 55°

Temperature range



DIN 48 x 48

DIN front bezel

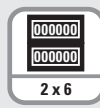


IP65

High protection level

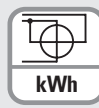


No reset



2 x 6

Display 2 x 6 digit



kWh

Energy meter



Timer

## Product features

- Metering of hours run and energy consumption in one compact device – panel mounting
- Wide temperature range
- Remote readout via SO outputs on request
- Shows both values in parallel
- Easy-to-read display – can also be read if no voltage present

## Benefits

- Tamper-proof fixed installation with high degree of protection
- High measuring accuracy
- Can be officially calibrated (MID)

## Applications

Dehumidifiers, hire equipment and machinery, air-conditioning, production equipment, current generators

## Order specifications

	Voltage	Order-No.	Delivery includes	MID version
HW 66	230 V AC	3.563.201.075 <sup>1)</sup>	- Counter	
HW 66	115 V AC	3.563.201.074 <sup>1)</sup>	- Gasket	
MID version: HW 66 M	230 V AC	3.56M.201.075 <sup>1)</sup>	- Mounting clip	



Accessories	Dimensions in mm [inch]	Order-No.
<b>Adapter front bezel, 55 x 55 [2.17 x 2.17]</b>	For cut-out 50 x 50 [1.97 x 1.97] to ø 50.5 [1.99], with clip mounting for counters 48 x 48 [1.89 x 1.89]	black <b>T008171</b>
<b>Adapter front bezel, 60 x 75 [2.36 x 2.95]</b>	For cut-out 50 x 50 [1.97 x 1.97] to cut-out 45 x 45 [1.77 x 1.77] with screw mounting for counters 48 x 48 [1.89 x 1.89]	black <b>T008860</b>
<b>Adapter front bezel, 72 x 72 [2.83 x 2.83]</b>	For cut-out 68 x 68 [2.68 x 2.68] to cut-out 45 x 45 [1.77 x 1.77] Mating clip T009420 must be ordered separately	black <b>T008177</b>
<b>Adapter front bezel, ø 72 [2.83]</b>	For cut-out ø 60 [2.36] to cut-out 45 x 45 [1.77 x 1.77] with clip mounting for counters 48 x 48 [1.89 x 1.89]	black <b>N510226</b>
<b>Adapter front bezel, 55 x 55 [2.17 x 2.17]</b>	For cut-out 50 x 50 [1.97 x 1.97] to cut-out 45 x 45 [1.77 x 1.77] with clip mounting for counters 48 x 48 [1.89 x 1.89]  Gasket 58 x 58 [2.28 x 2.28], for cut-out 50.2 x 50.2 [1.98 x 1.98]	black <b>T008853</b> <b>N511004</b>
<b>Mounting frame</b> with cut-out 50 x 50 [2.36 x 2.36] via separate adapter also for 45 x 45 [1.77 x 1.77]	For snap-on mounting on 35 [1.38] top-hat DIN rail, for counters 48 x 48 [1.89 x 1.89], 53 x 53 [2.09 x 2.09] and 55 x 55 [2.17 x 2.17]	chromated <b>G300003</b>

Suitable gaskets as well as further accessories can be found in the accessories section or in the accessories area of our website at: [www.kuebler.com/accessories](http://www.kuebler.com/accessories).

1) Standard stock model

# Energy meters

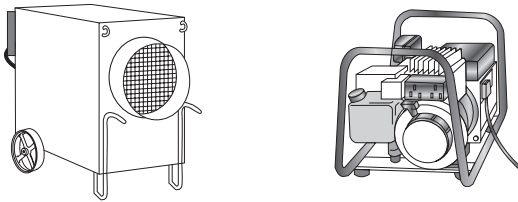
<b>Dual function counters</b>	<b>Energy and time (AC)</b>	<b>HW 66 / HW 66 M</b>
-------------------------------	-----------------------------	------------------------

General technical data	
<b>Power supply</b>	115/230 V AC, -20 % / +15 % 50 or 60 Hz
<b>Digits</b>	2 x 6 digit (single units digit red)
<b>Height of figures (optical)</b>	4 x 1.7 mm [0.16 x 0.067"]
<b>Colour of figures</b>	white and red on black
<b>Operating temperature</b>	-20°C ... +55°C [-4°F ... +131°F] (non-condensing)
<b>Storage temperature</b>	-25°C ... +65°C [-13°F ... +149°F]
<b>Housing</b>	DIN panel-mount 48 x 48 mm [1.89 x 1.89"]
<b>Depth</b>	55 mm [2.17"]
<b>Norm</b>	EN 50470-1 and EN 50470-3
<b>Protection</b>	IP65, EN 60529 (front side)
<b>Connections</b>	screw terminal, touch-safe
<b>Max. core cross-section</b>	inputs/outputs 2.5 mm <sup>2</sup> [AWG 13] SO output 2.5 mm <sup>2</sup> [AWG 13]
<b>LED function</b>	LED on when power supply is connected LED blinks when energy is being measured

Energy meter	
<b>Display</b>	99999.9 kWh
<b>Accuracy</b>	Class B, acc. to MID (for 50 Hz version)
<b>Current</b>	I <sub>B</sub> = 5 A, I <sub>max</sub> = 16 A
<b>Current limits</b>	> 20 mA up to 16 A
<b>Start current</b>	> 20 mA
<b>SO output</b>	1000 pulses/kWh, 5 ... 30 V DC, I <sub>max</sub> = 20 mA

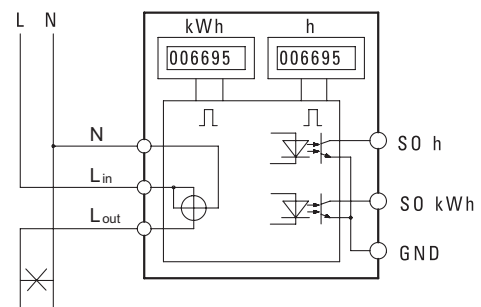
Hour meter	
<b>Display</b>	99999.9 h (0.1 h = 6 min)
<b>Accuracy</b>	± 2 %
<b>SO output</b>	10 imp/h, 5 ... 30 V DC, I <sub>max</sub> = 20 mA
<b>Start</b>	with voltage applied to L <sub>in</sub>

## Applications



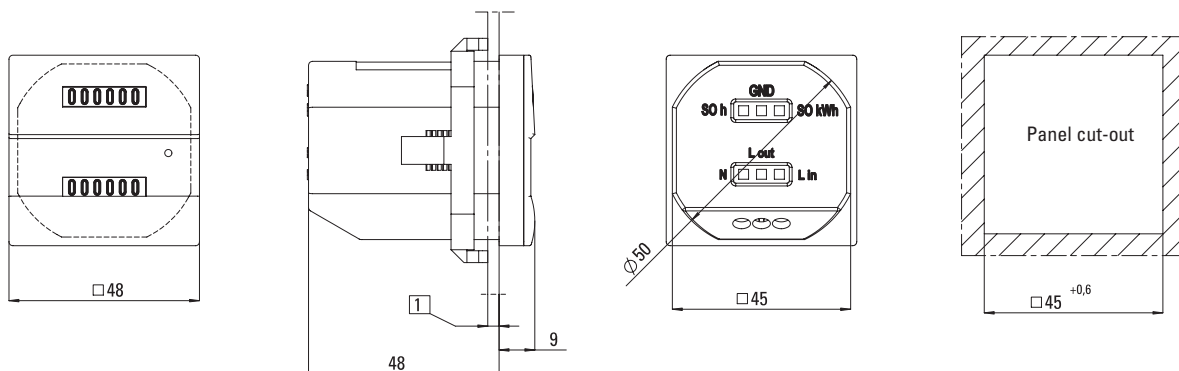
Retro- or standard fitting in dehumidifiers, current generators, air-conditioning, production equipment etc. for the accurate, traceable billing of operating and energy costs – especially also for hire equipment.

## Terminal assignment



## Dimensions

Dimensions in mm [inch]



1 max. 6,5 [0.26]